

# AWESOME PATTERNS



## BLACK PHILLIPP/ GOAT MASK

### Required Materials

- Printer
- A4 or US letter size printer paper
- Thick paper or thin cardboard
- Spray adhesive or a glue stick
- Scissors
- Craft knife
- Clear tape OR fast-drying wood glue
- Thick sewing needle or blunt knife and a ruler to score the folds

### A Special Note About Printing

This mask is designed to be printed on US Letter paper (8 1/2" x 11") or European A4 paper (210mm x 297mm) .

Make sure that the "print to scale" option is blank/not checked on your printer settings to ensure that the pages print at the intended size.

You can check the scale by measuring the printed line on the first pattern page with a ruler.

# Instructions for Printing and Folding

Print on thin Paper and adhere the mask pieces to cardboard. This method will result in the printed lines and pattern guide numbers being hidden on the inside of the finished mask.

(1) Print your mask pieces on plain printer paper.

(2) Glue the mask pieces to the back of your cardboard. We recommend using spray adhesive or a glue stick as other types of glue may make the paper too wet.

(3) Cut out the pattern pieces along the solid cutting lines.

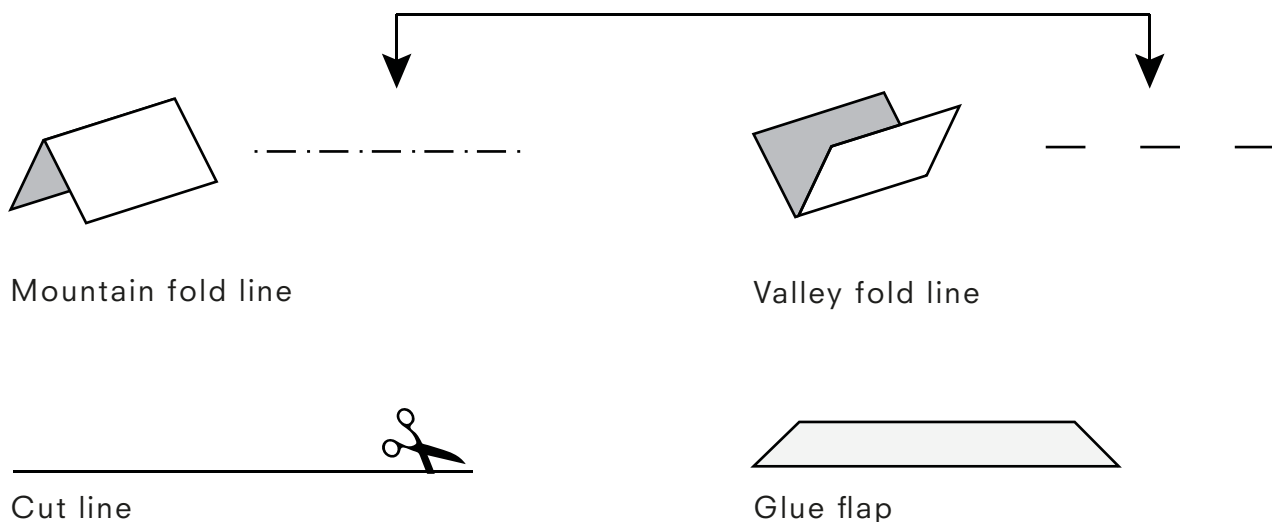
**Note: the dashed lines are folding lines, make sure not to cut them!**

(4) Using a thick sewing needle or blunt knife and a ruler, score along the folding lines.

(5) Refer to the diagram below and fold along the creases either bringing the two edges towards you (Valley Fold) for the plain dashed line folds or away from you (Mountain Fold) for the dot/dashed line folds.

(6) Proceed to Assembly Instructions section.

IMPORTANT



# Mask Assembly Instructions

## Assembly

(7) Each number on the mask pattern has a twin. Find the matching numbers and attach the two pieces together.

We recommend using one of the following methods for attaching the mask pieces together.



### Option 1 / Easy Clear Adhesive Tape

Place a piece of tape on the outside of the pattern covering the joint where the two edges meet. Tape all pieces together.

**pro:** easy and fast!

**con:** tape is visible from the outside



### Option 2 / Advanced Glue

Although it is a bit more tricky than using tape, we recommend using a fast-drying wood glue to adhere the mask pieces. The glue should dry clear. Stick all pieces together.

**Note:** You could also use a glue stick to attach the pieces together, but the finished mask may be less durable.

**pro:** invisible!

**con:** time consuming

(8) After completing the mask you can optionally assemble our fitting band on the final page. Tape it to the inside to get an optimal fit for your mask.

**Note: Halfmasks don't require a fitting band**

(9) Let your creativity flow. You can decorate and color your mask anyway you like.



HAVE FUN

WE LOVE TO SEE YOUR CREATIONS.

TAG YOUR PHOTOS WITH THE HASHTAG

**#AWESOME PATTERNS**

AND SHARE THEM WITH US  
ON FACEBOOK OR INSTAGRAM

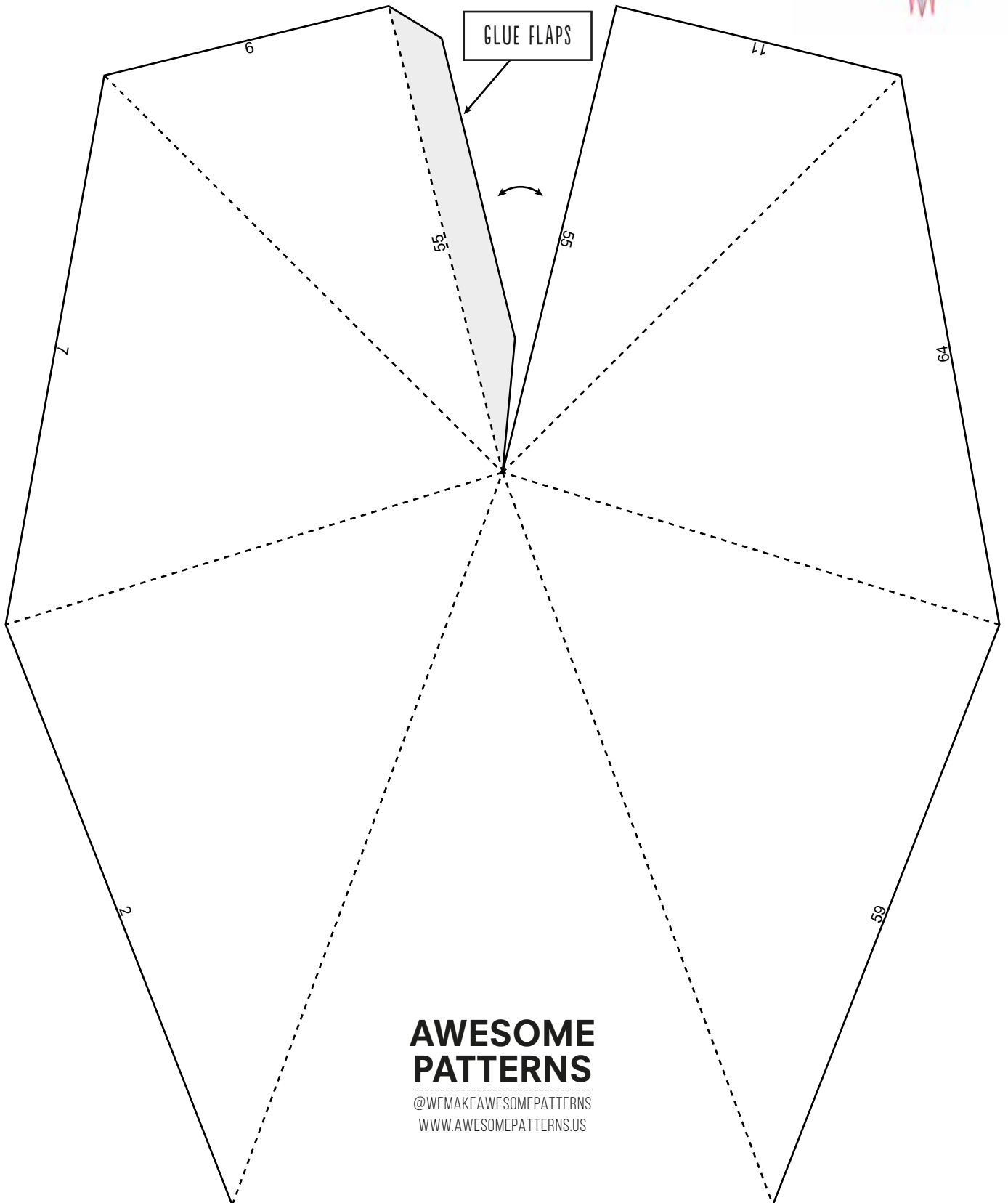
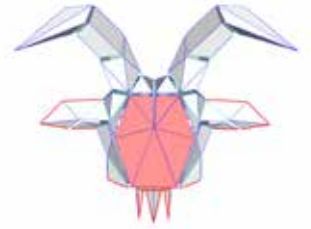
[WWW.FACEBOOK.COM/WEMAKEAWESOME PATTERNS](http://WWW.FACEBOOK.COM/WEMAKEAWESOME PATTERNS)  
INSTAGRAM >>> [@WEMAKEAWESOME PATTERNS](https://www.instagram.com/wemakeawesomepatterns)

YOU HAVE QUESTIONS?

**CONTACT US**

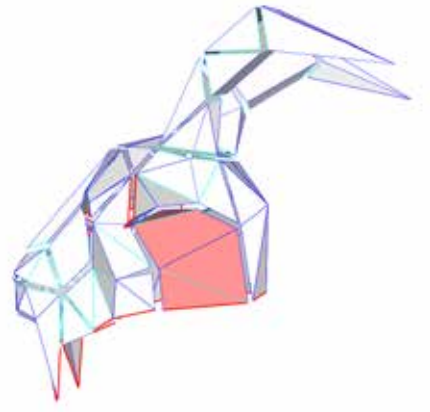
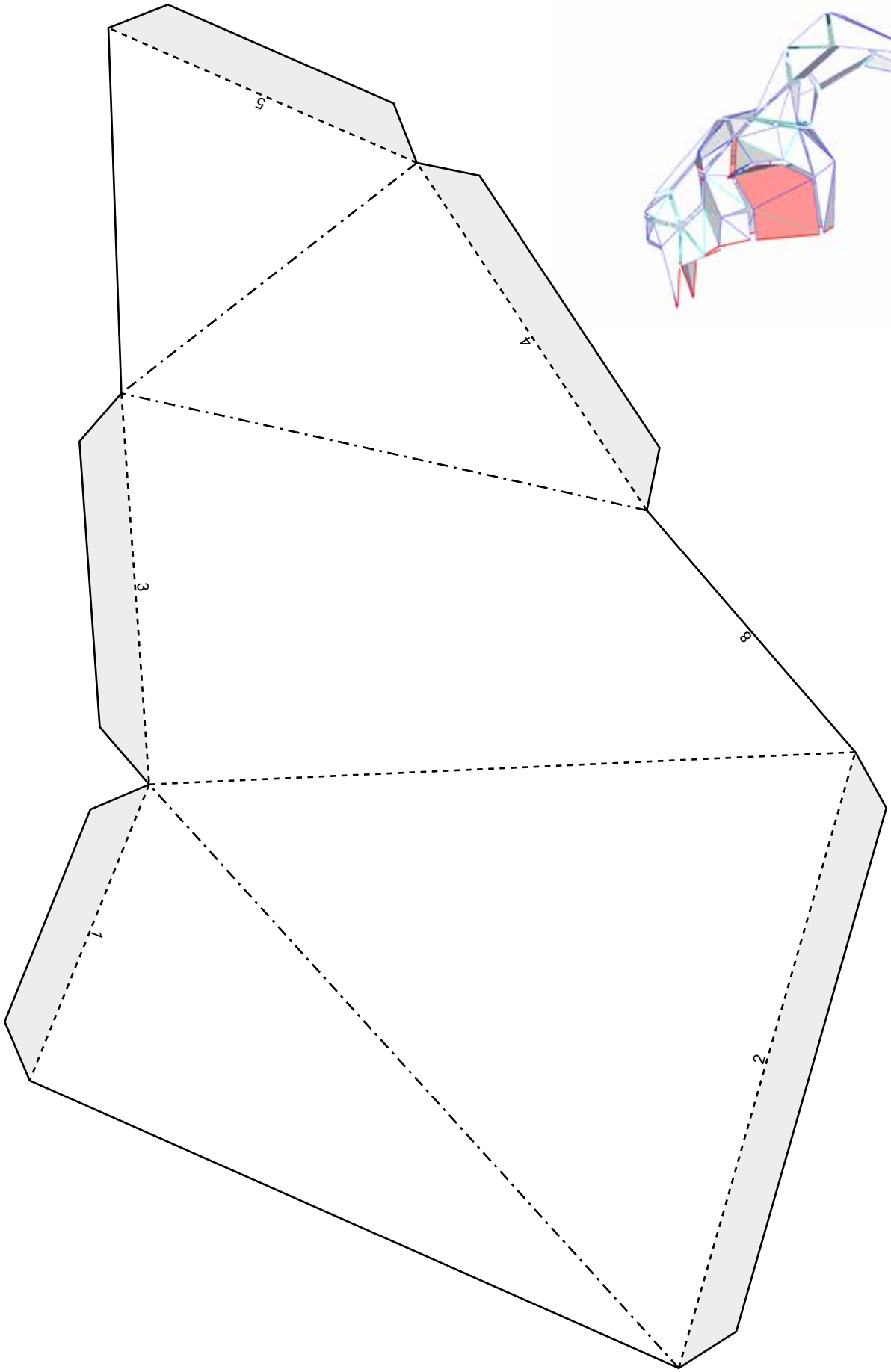
[MAIL@AWESOME PATTERNS.US](mailto:MAIL@AWESOME PATTERNS.US)

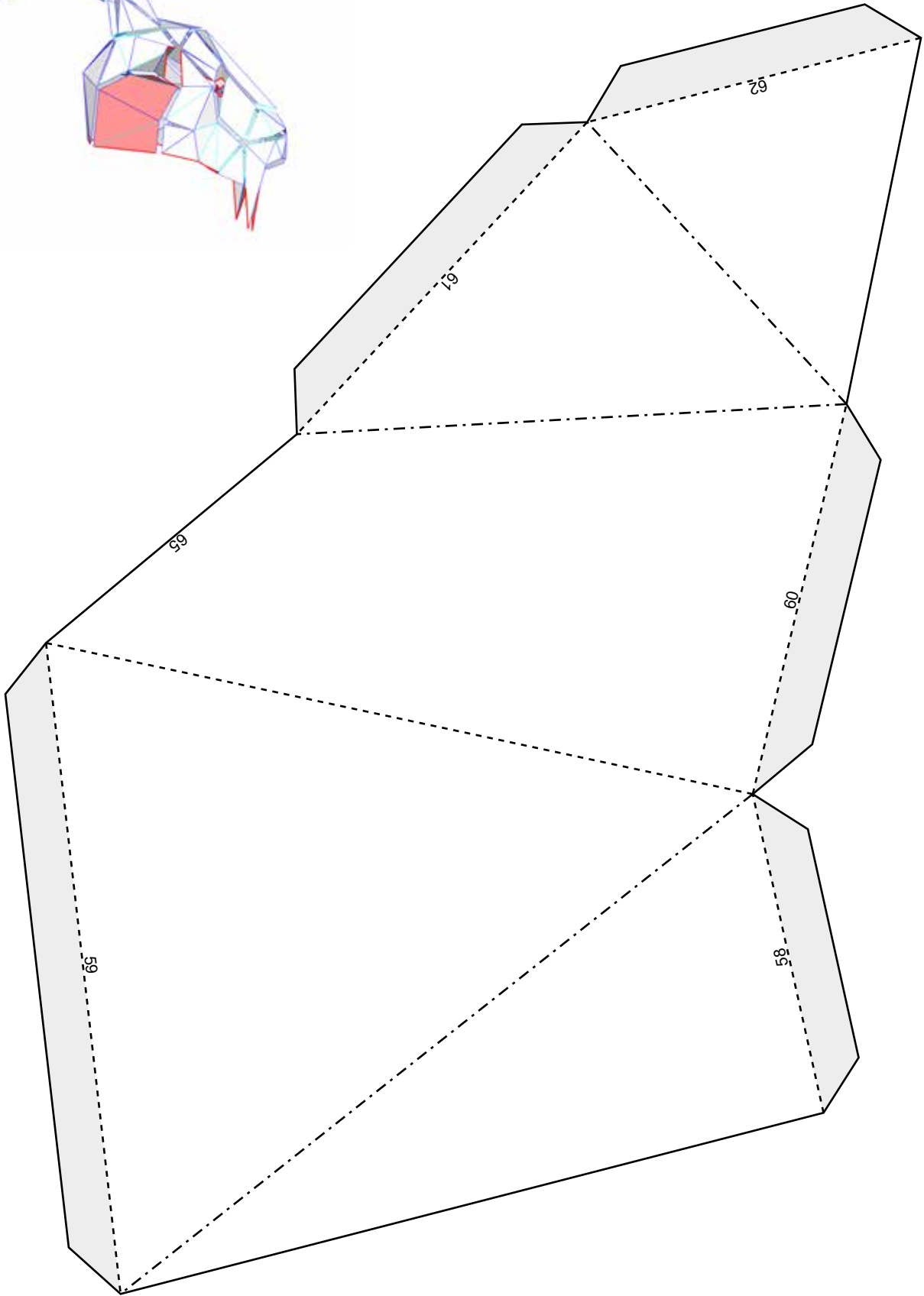
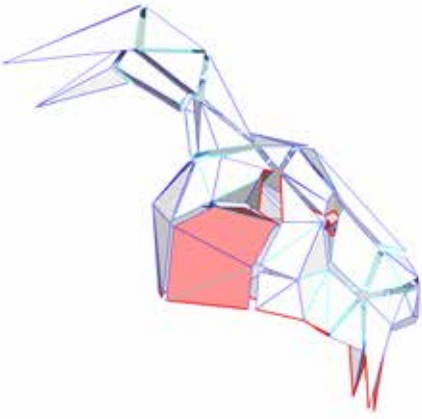
4" (100mm)

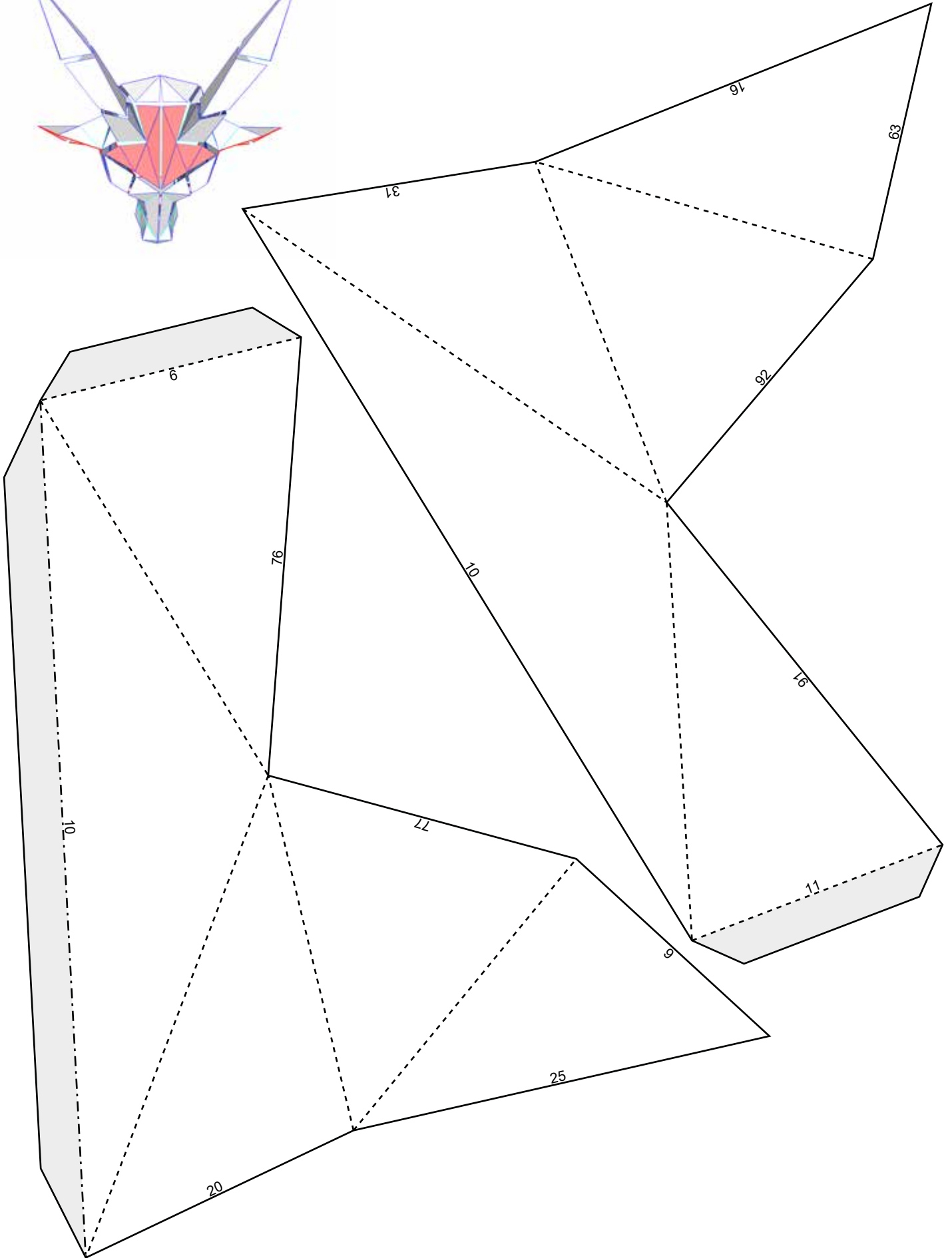
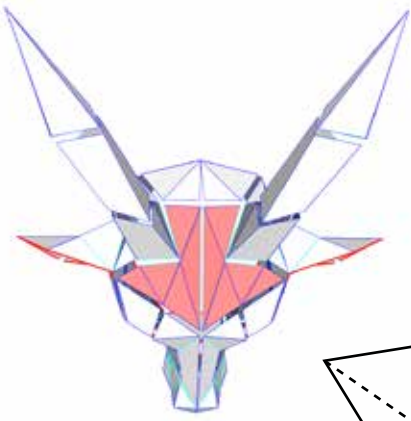


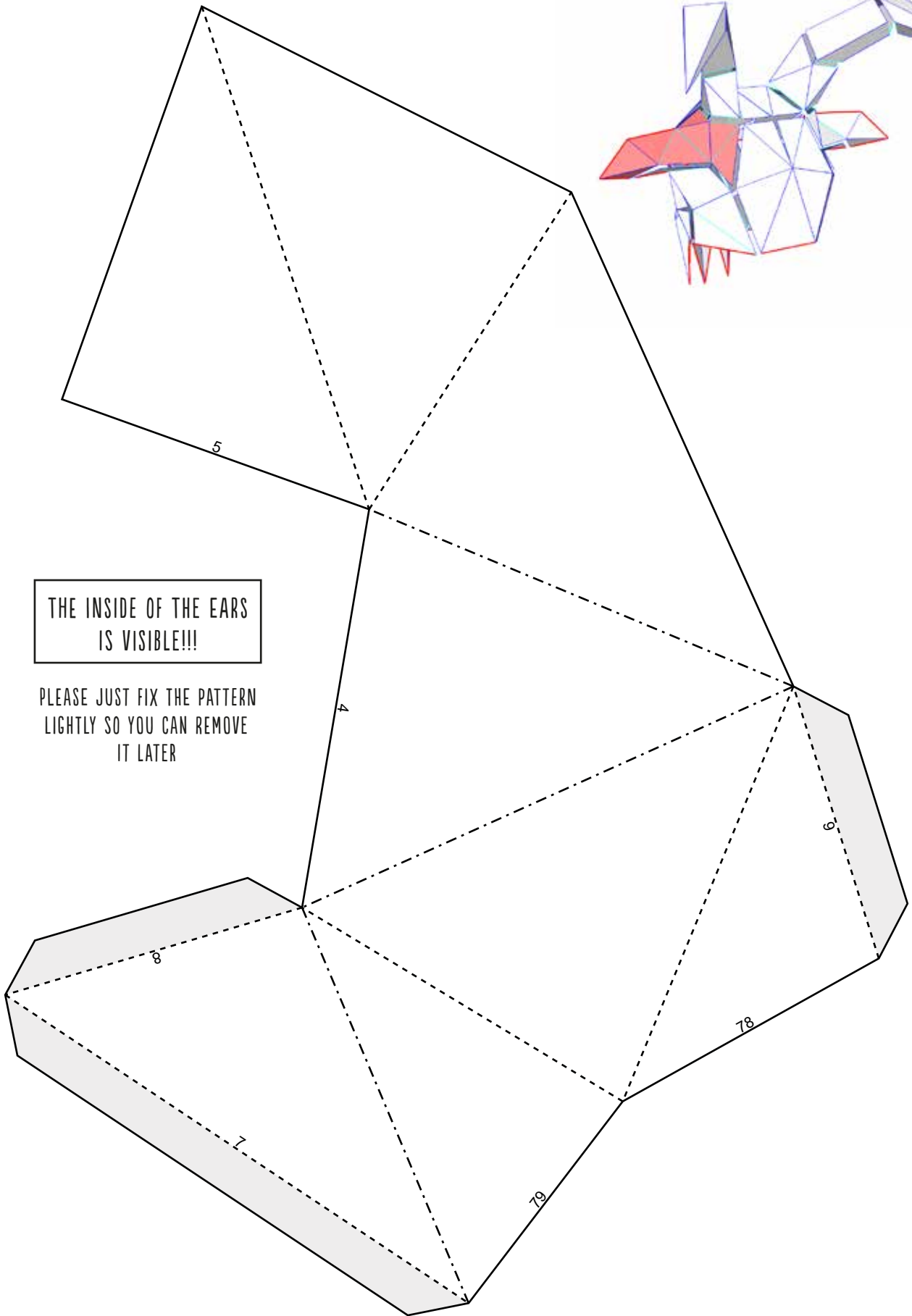
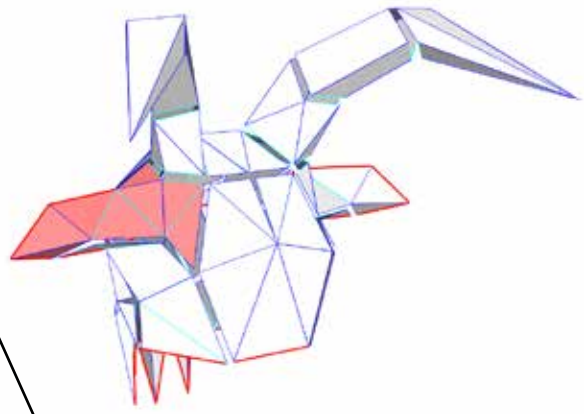
**AWESOME  
PATTERNS**

@WEMAKEAWESOME PATTERNS  
WWW.AWESOME PATTERNS.US





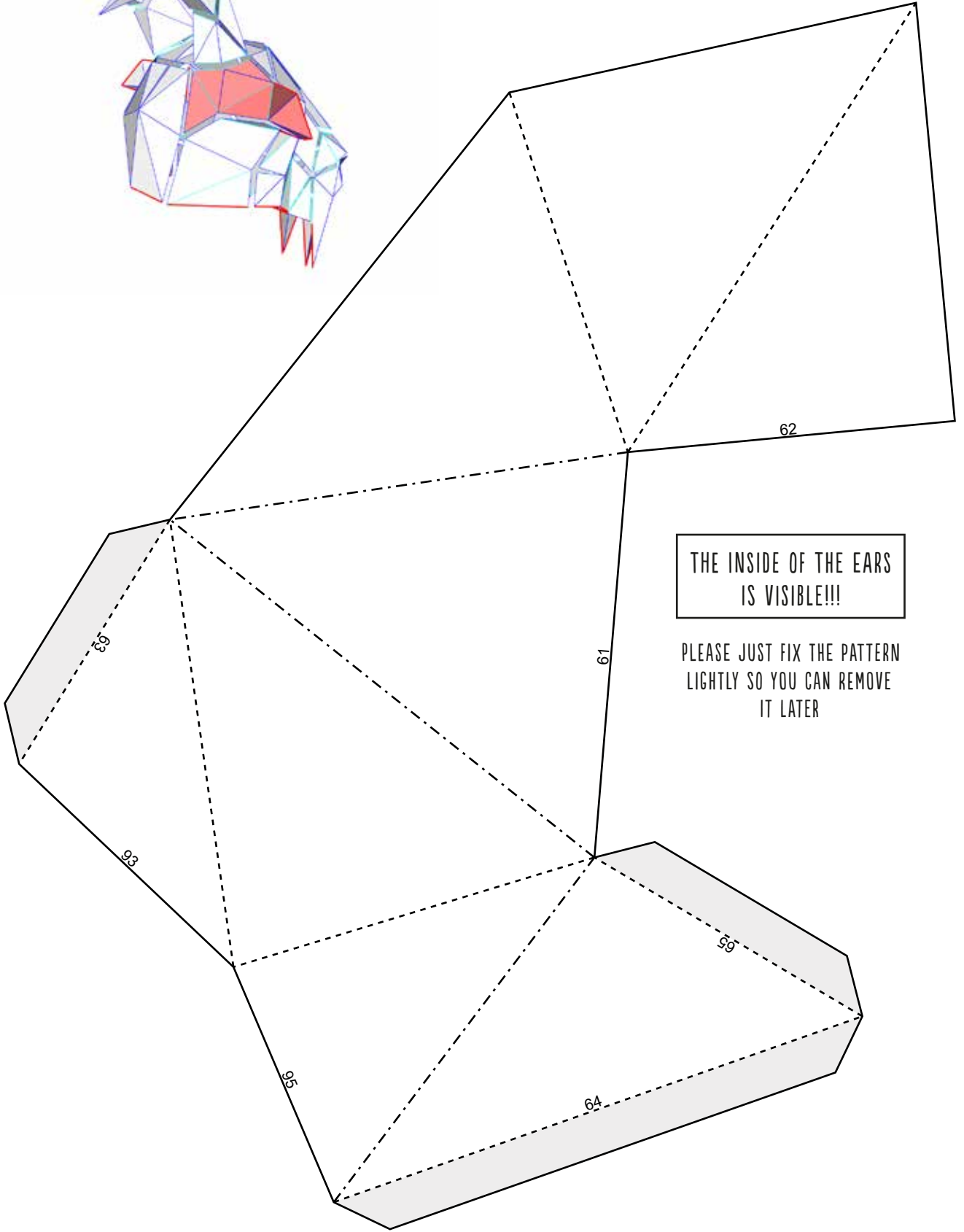
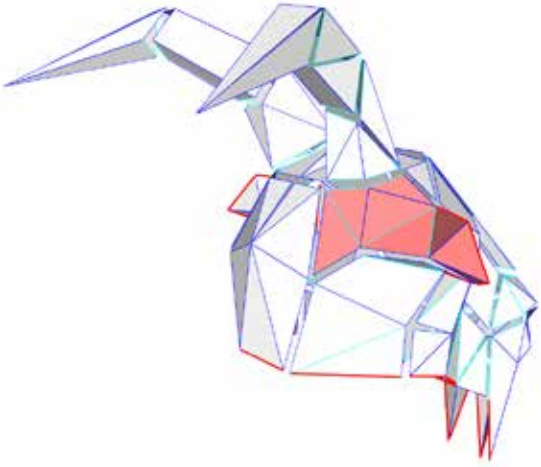




THE INSIDE OF THE EARS  
IS VISIBLE!!!

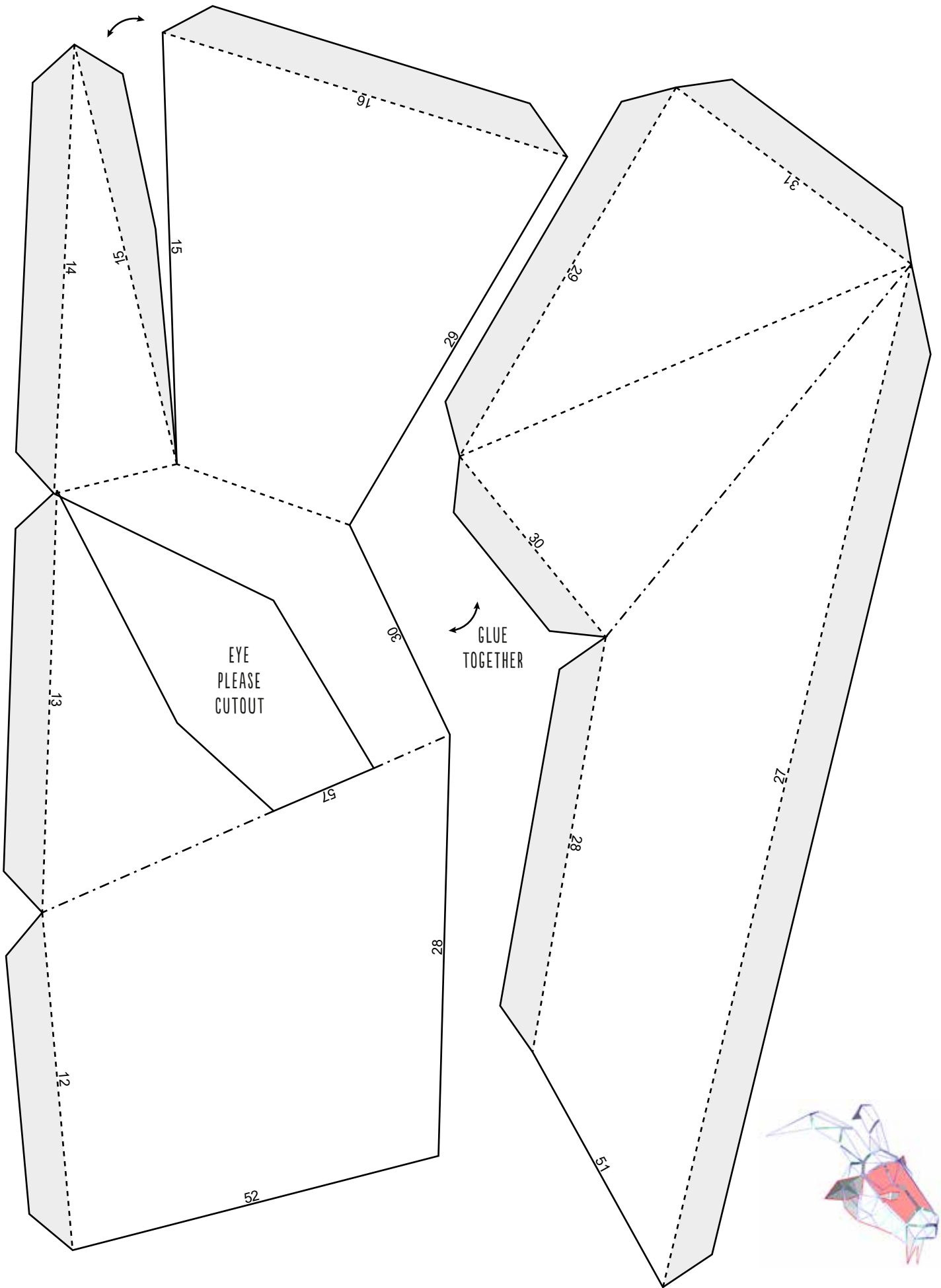
PLEASE JUST FIX THE PATTERN  
LIGHTLY SO YOU CAN REMOVE  
IT LATER

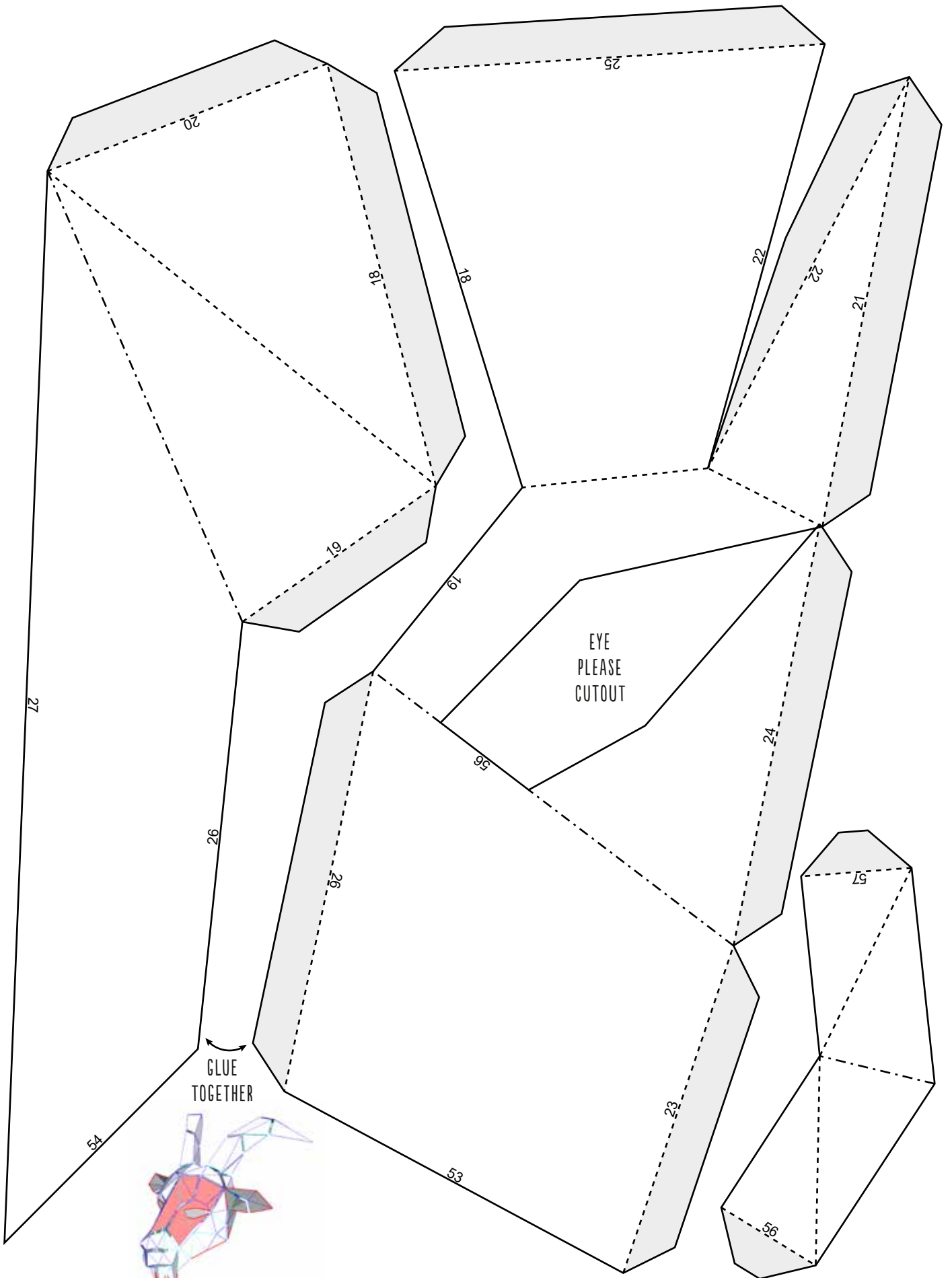




THE INSIDE OF THE EARS  
IS VISIBLE!!!

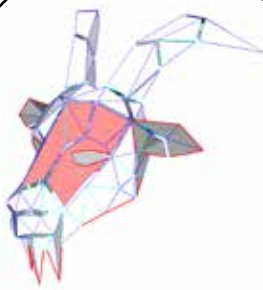
PLEASE JUST FIX THE PATTERN  
LIGHTLY SO YOU CAN REMOVE  
IT LATER

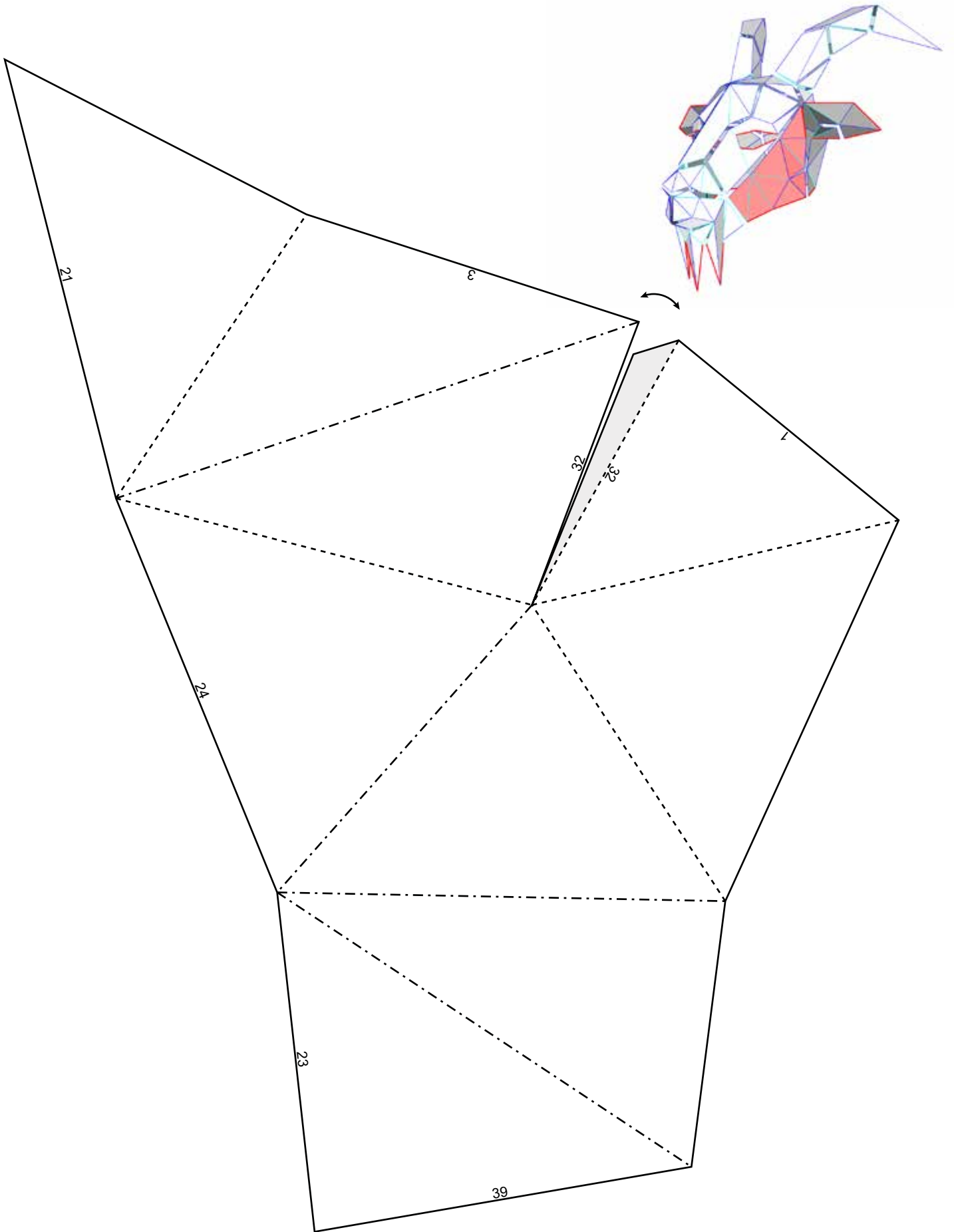


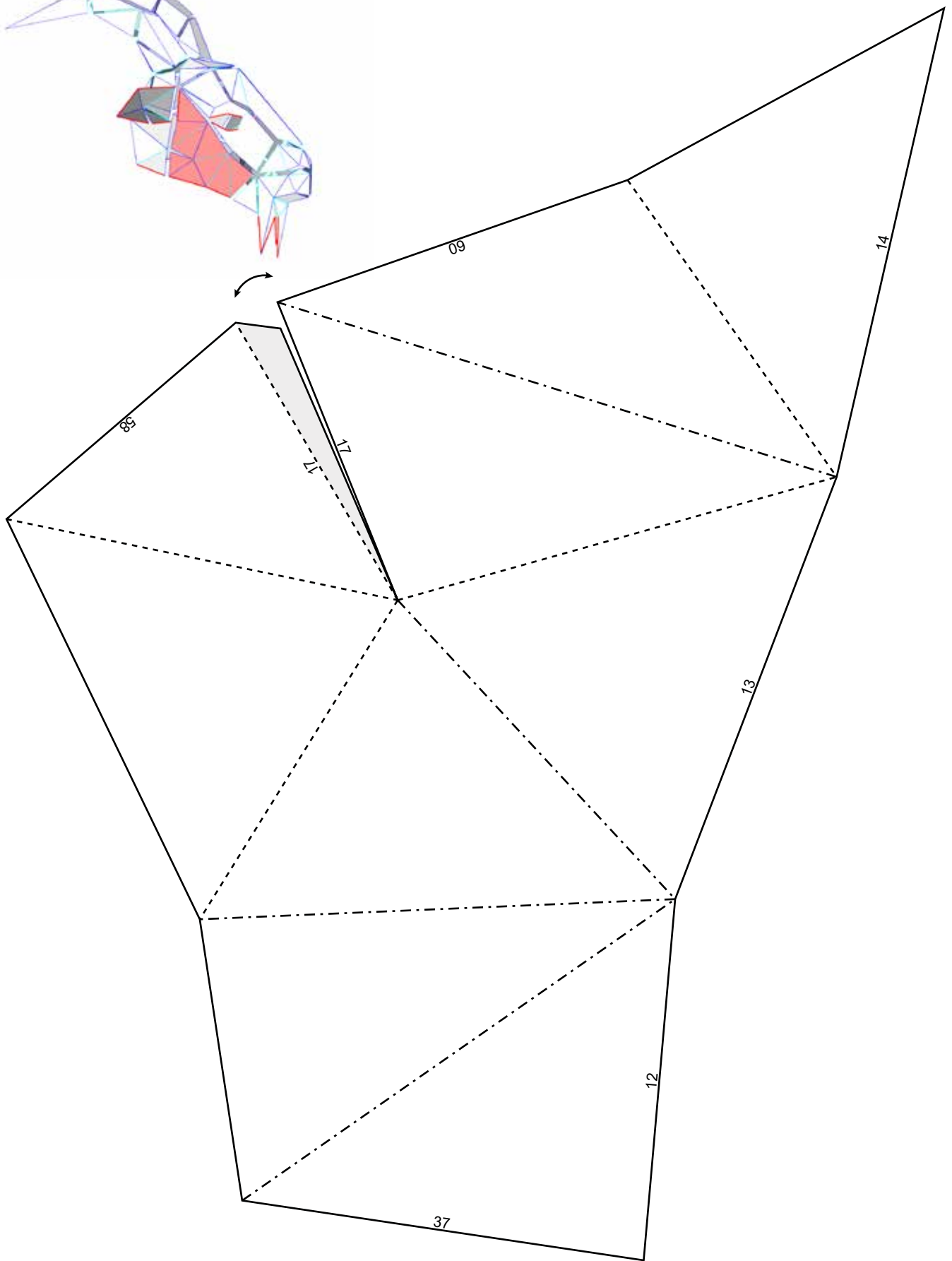
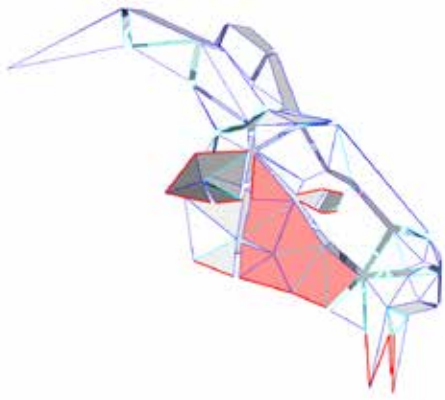


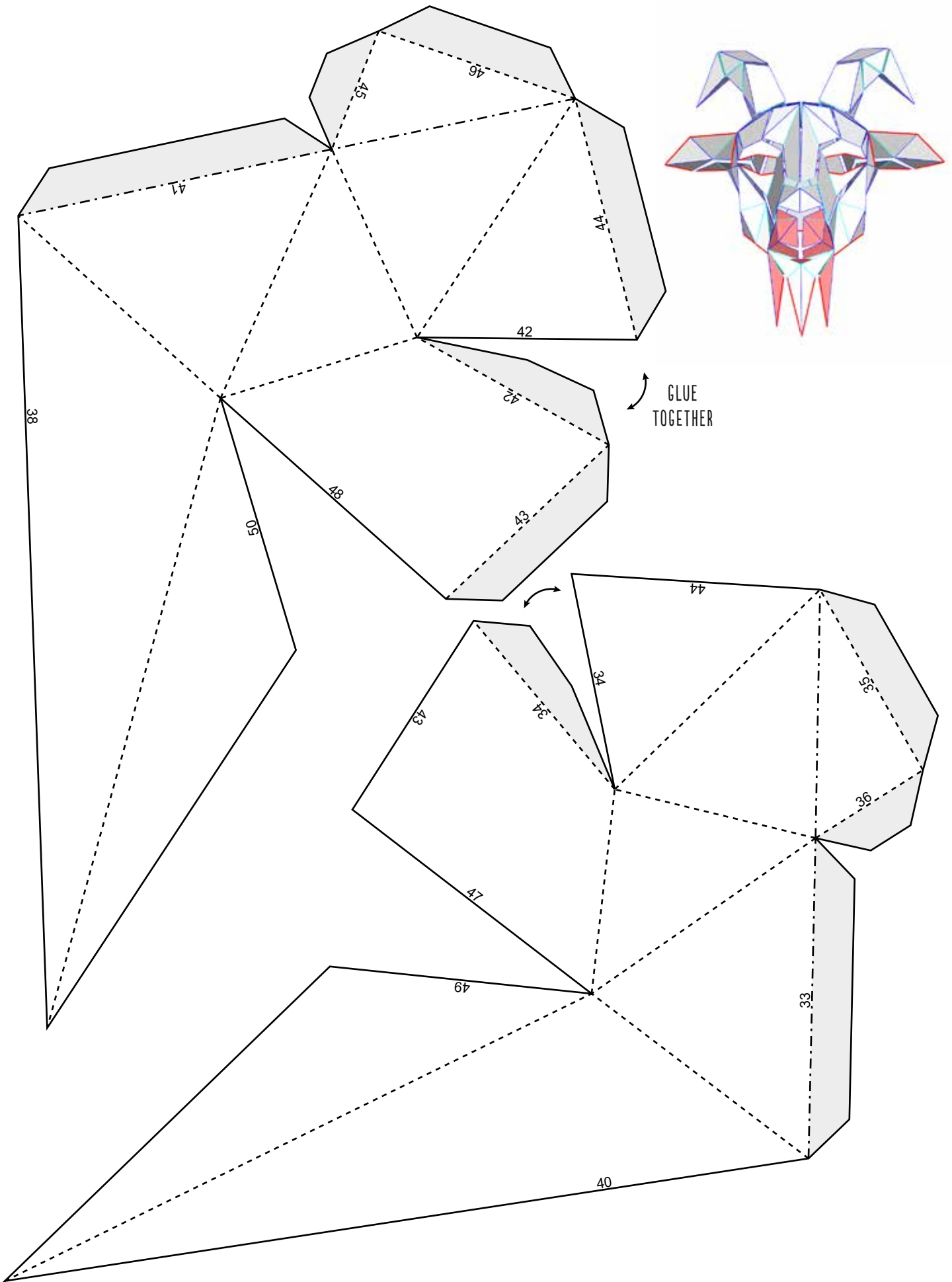
EYE  
PLEASE  
CUTOUT

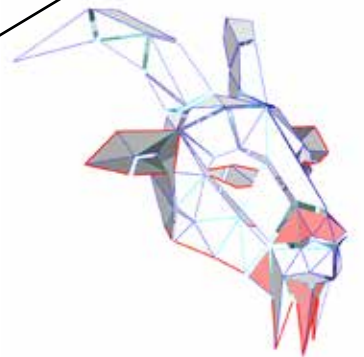
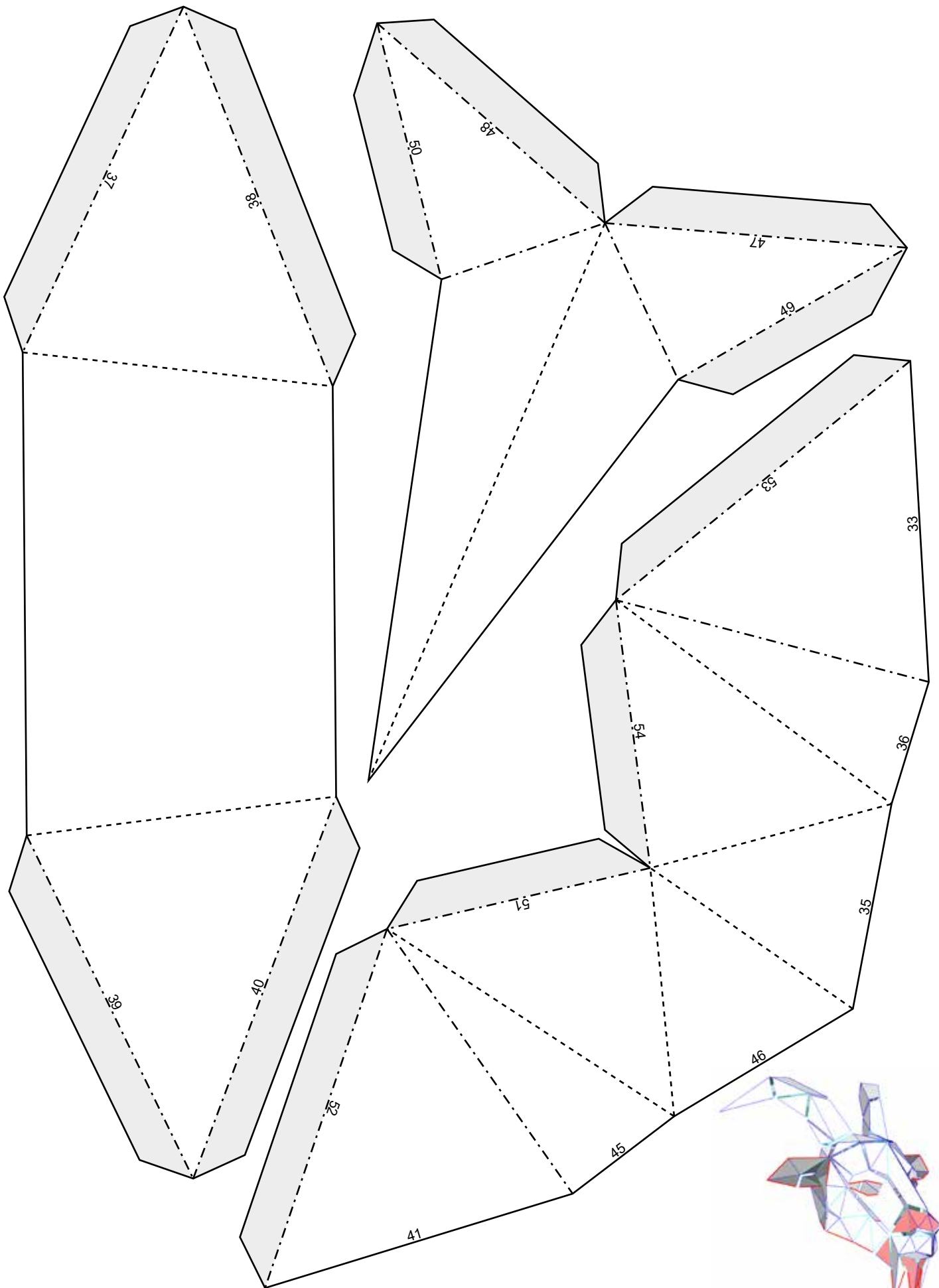
GLUE  
TOGETHER

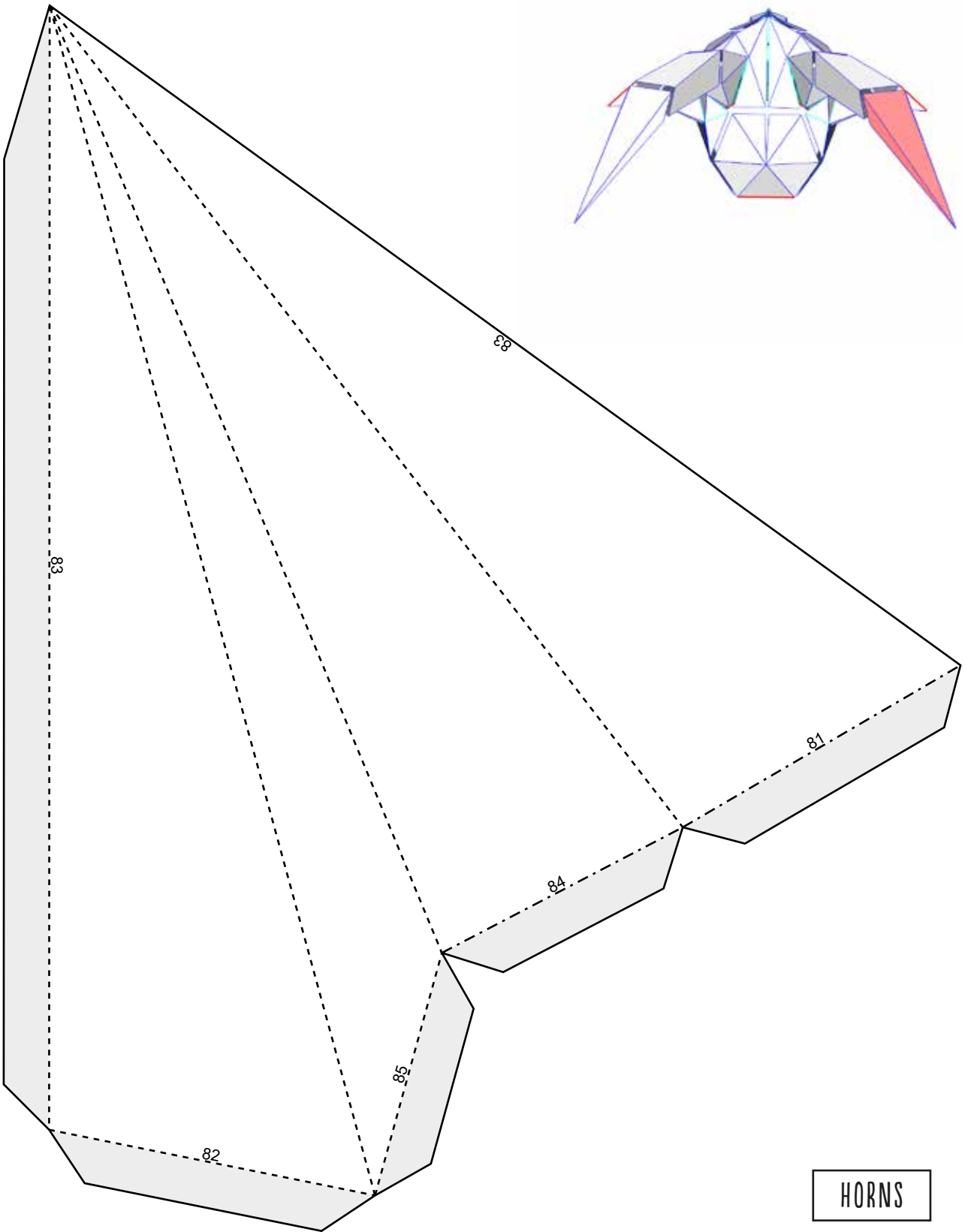
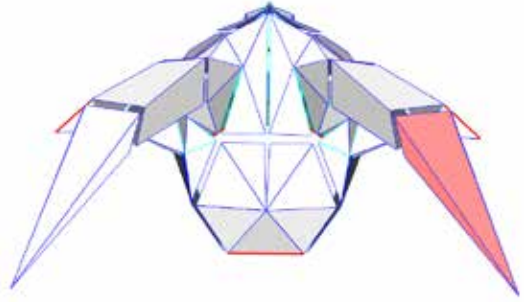








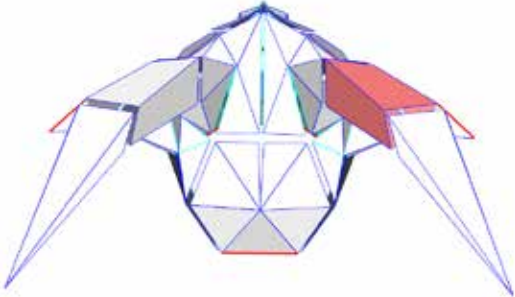
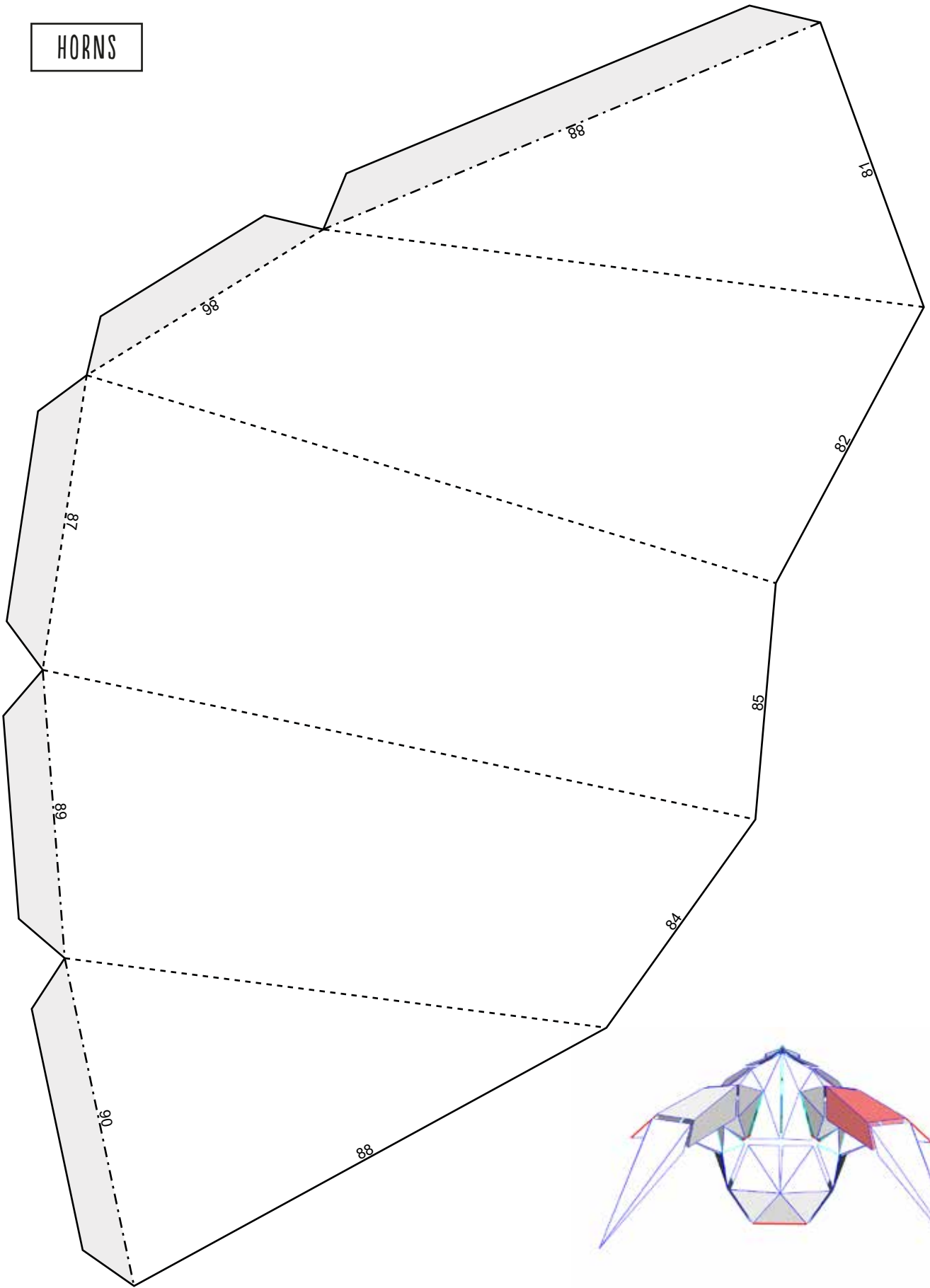


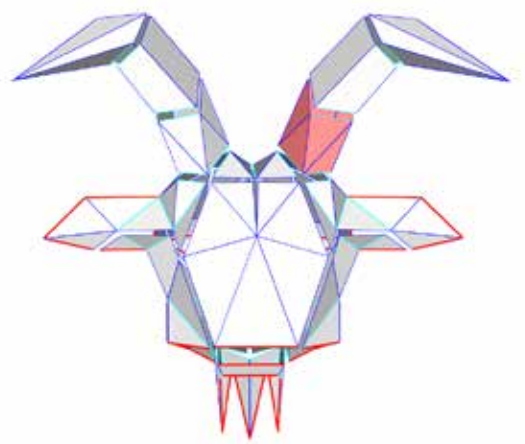
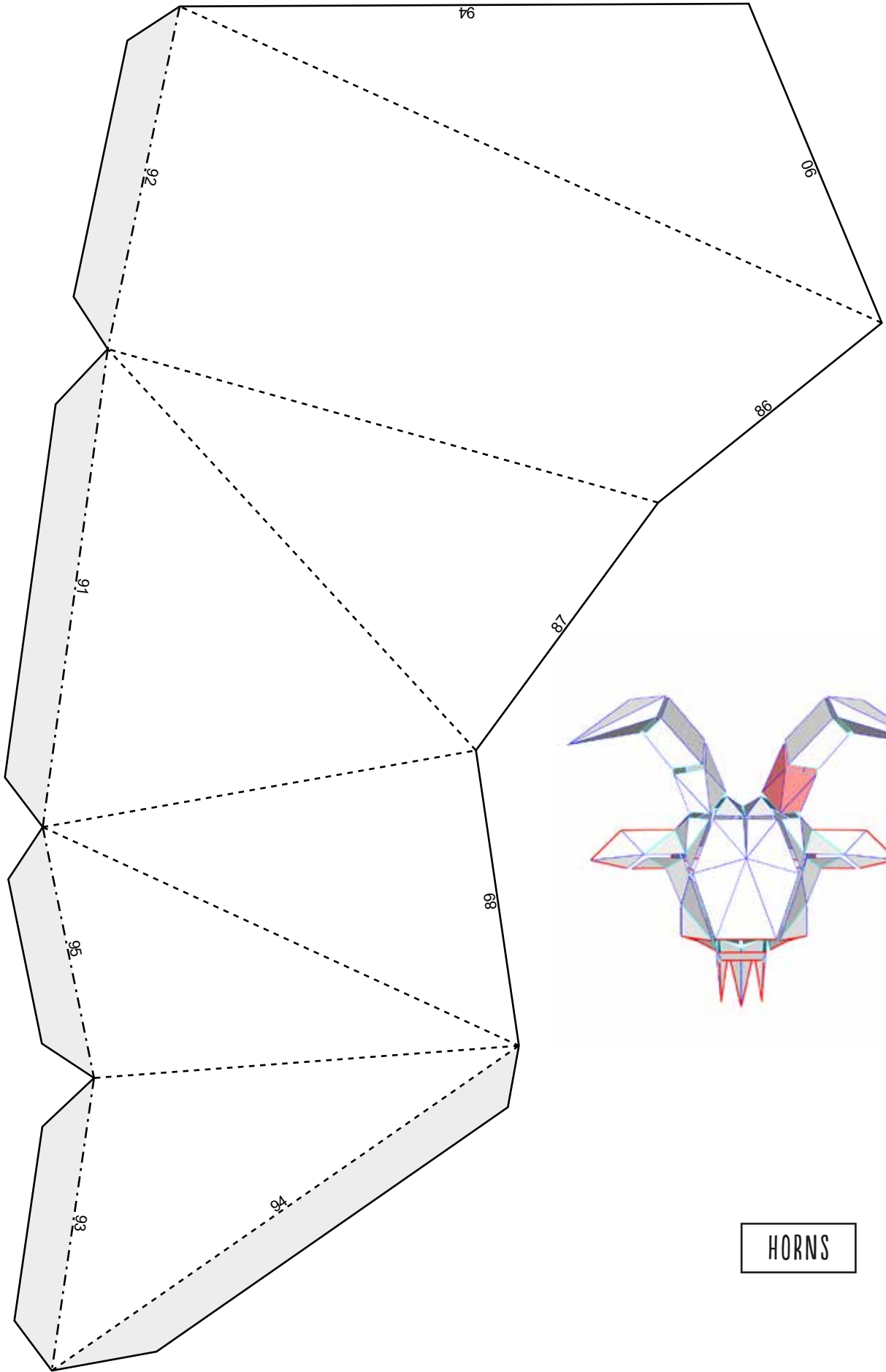


HORNS

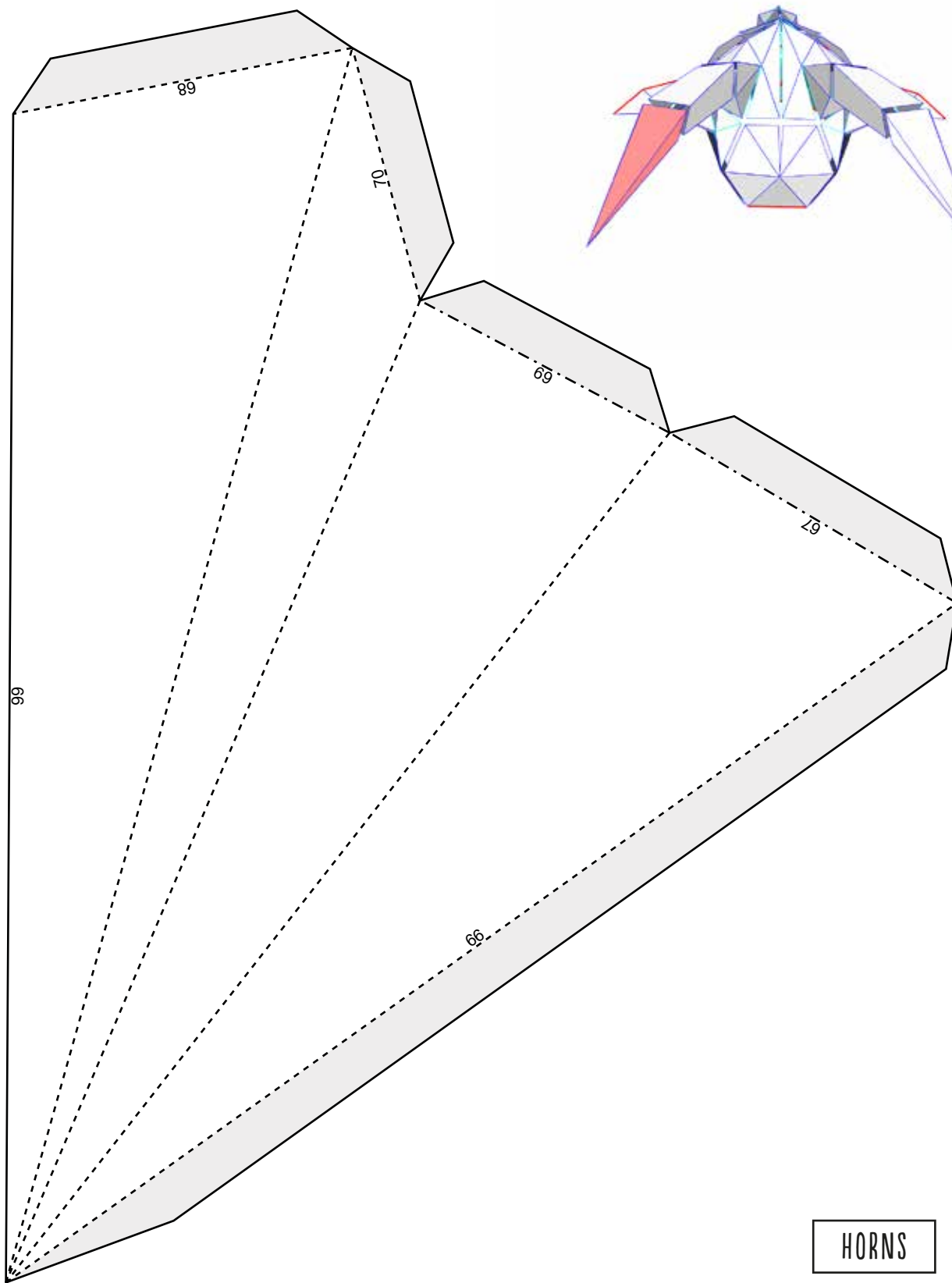


HORNS

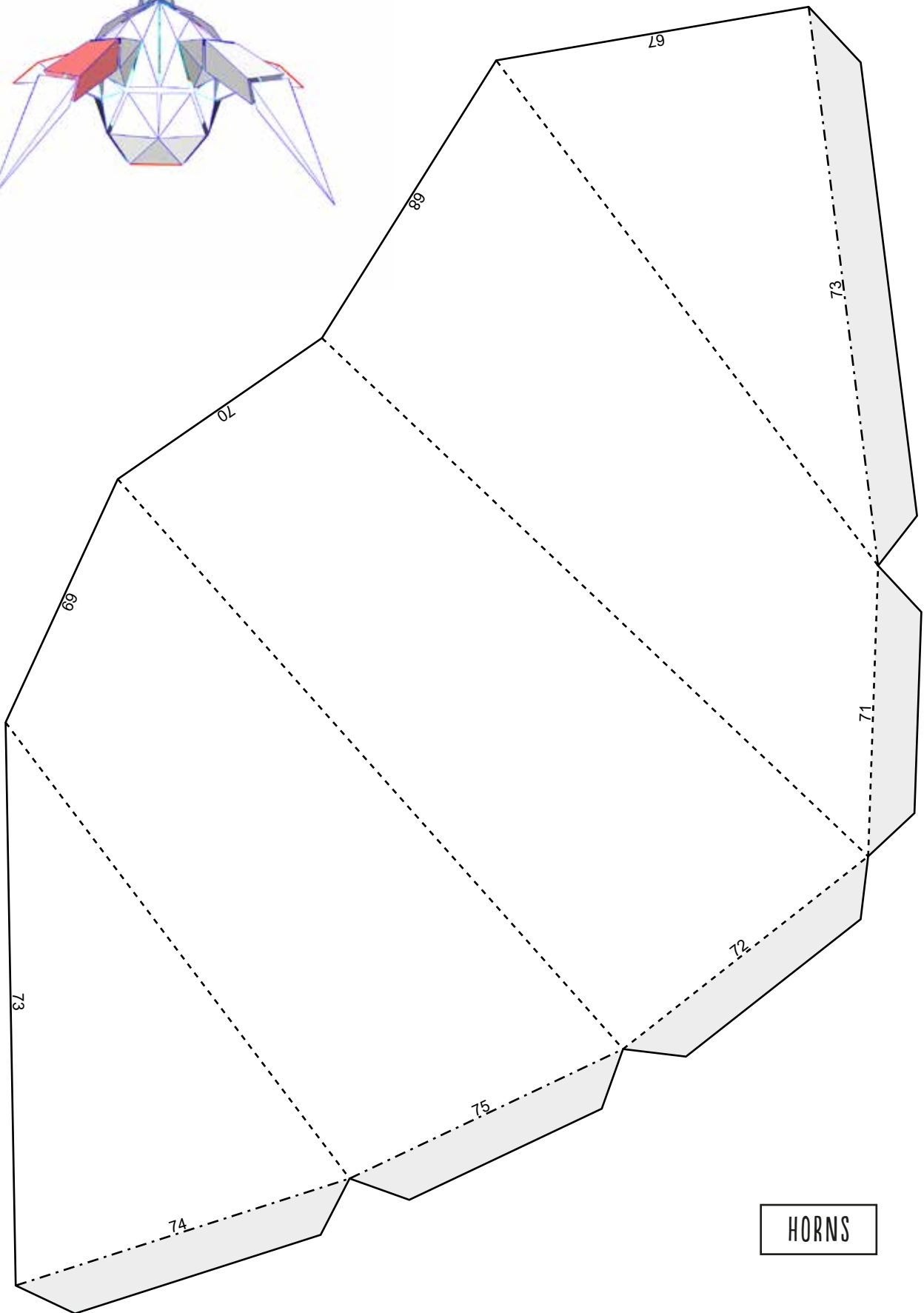
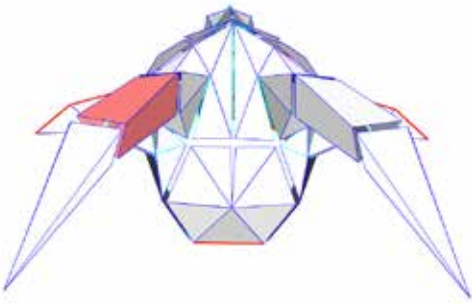




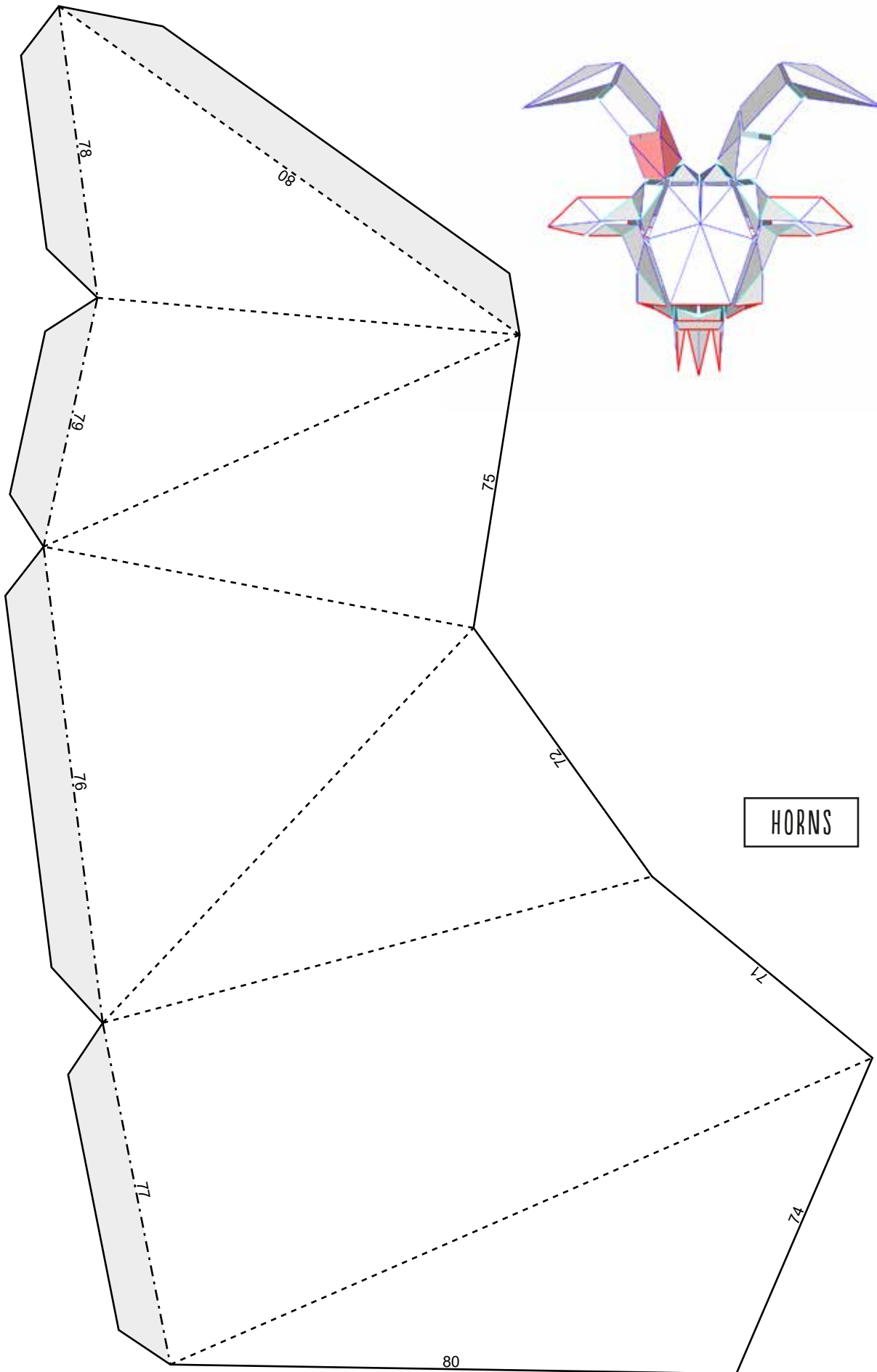
HORNS



HORNS



HORNS



HORNS

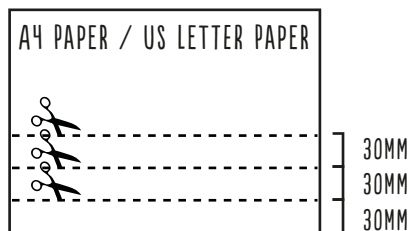
# The Fitting Band

The fitting band for your mask will be made from strips of cardboard paper and can be adjusted to get a good fit.

- (1) Cut 3 strips of A4/US letter paper. Each strip should measure 1.2" wide (30mm) and the length will be the full length of the page.
- (2) Stick the short ends of the strips together with tape to make one long strip of paper.
- (3) Wrap the long strip around your head, overlapping the ends; make sure that the resulting band is a snug fit.
- (4) Tape the ends closed to make one continuous loop of paper.
- (5) Cut out 2 rectangles from the sheet of paper, each one should measure 1.2" x 2.4" (30mm x 90mm).
- (6) Tape one rectangle on either side of the band (see drawing below).
- (7) Place the fitting band inside of the mask and tape it to the back of the mask.

---

## CUTOUT



## ARRANGE

